

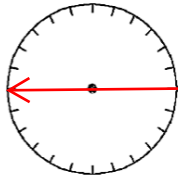
PLACE ARROW INDICATING NORTH  
DIRECTION RELATIVE TO CROSSING

# UNDERGROUND WIRELINE CROSSING OVER 750 VOLTS

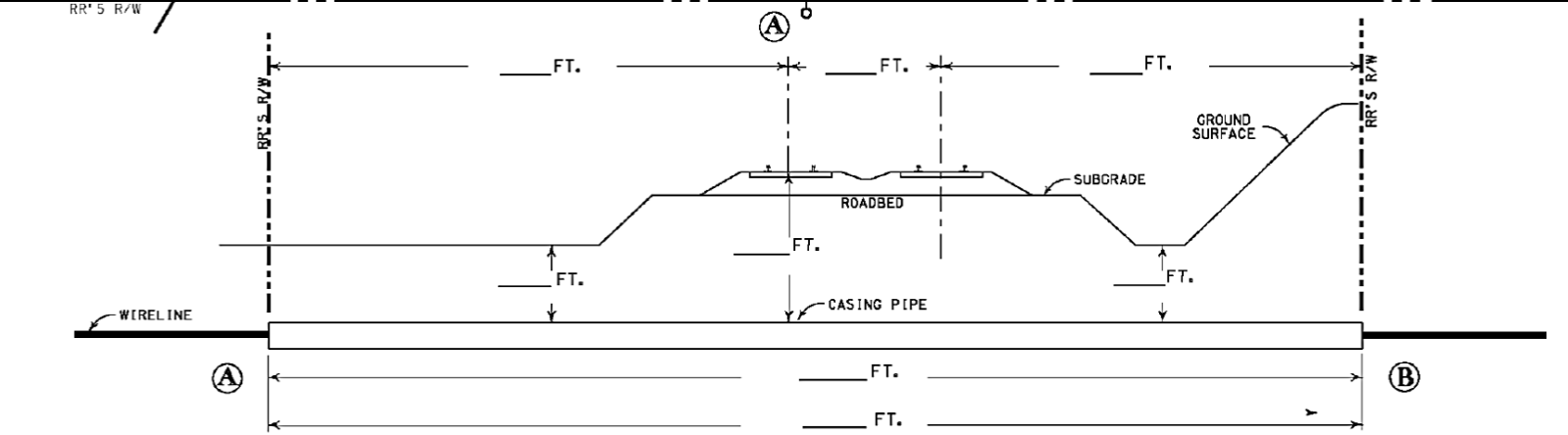
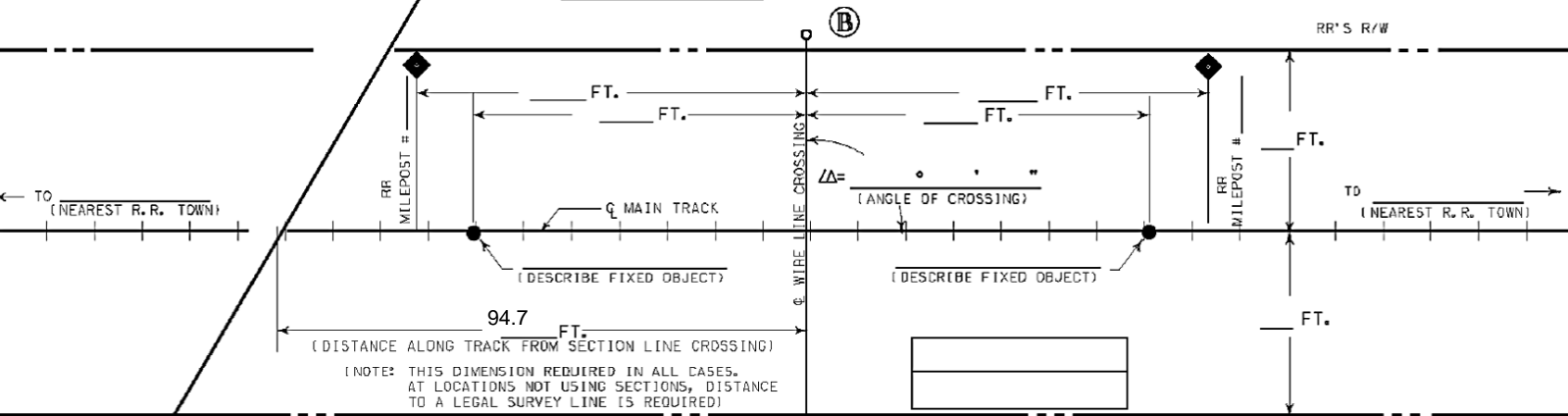
FORM DR-0404-G  
REV 10-26-2007  
www.uprr.com

NOTE: ALL AVAILABLE DIMENSIONS MUST BE  
FILLED IN TO PROCESS THIS APPLICATION.

NO SCALE



(OR LEGAL SURVEY LINE, WHERE APPLICABLE)  
LINE SECTION \_\_\_\_\_, TOWNSHIP \_\_\_\_\_, RANGE \_\_\_\_\_, MERIDIAN \_\_\_\_\_



NOTES :

FORMULA TO FIGURE CASING  
LENGTH WITH ANGLE OF  
CROSSING OTHER THAN 90°



- A) VOLTAGE TO BE CARRIED UNDER TRACK \_\_\_\_\_
- B) TYPE WIRELINE CROSSING: \_\_\_\_\_
- C) MAXIMUM CURRENT \_\_\_\_\_
- D) PHASE \_\_\_\_\_ NO. OF CIRCUITS \_\_\_\_\_
- E) MAX. OPERATING CURRENT TO GROUND AT FEED END \_\_\_\_\_ AMPS.
- F) MAX. OPERATING CURRENT TO GROUND AT LOAD END \_\_\_\_\_ AMPS.
- G) WHAT TYPE OF FACILITY WILL LINE BE SERVING? \_\_\_\_\_
- H) IF SEPARATE CABLES ARE USED, WHAT IS THE AVG. DISTANCE BETWEEN CABLES? \_\_\_\_\_
- I) IF A NEW POWER SUBSTATION IS TO BE BUILT OR REVISED WITHIN 1/2 MILE OF RR,  
WHAT IS: MAX OPERATING CURRENT TO GROUND? \_\_\_\_\_ AMPS;  
MAX RESISTANCE TO GROUND? \_\_\_\_\_ OHMS; MAX FAULT CURRENT TO GROUND? \_\_\_\_\_ AMPS.
- J) CASING TYPE TO BE INSTALLED \_\_\_\_\_
- K) METHOD OF INSTALLING CASING PIPE UNDER TRACK(S):  
(WET BORE NOT PERMITTED) \_\_\_\_\_
- L) DISTANCE FROM CENTER LINE OF TRACK TO NEAR FACE OF BORING AND JACKING PITS  
WHEN MEASURED AT RIGHT ANGLES TO TRACK \_\_\_\_\_ FT. (30' MIN.)
- M) APPLICANT HAS CONTACTED 1-800-336-9193  
U. P. COMMUNICATION DEPARTMENT, AND HAS DETERMINED FIBER OPTIC CABLE  
\_\_\_\_\_ EXIST IN VICINITY OF WORK TO BE PERFORMED.  
TICKET NO. \_\_\_\_\_

**EXHIBIT "A"**  
(FOR RAILROAD USE ONLY - DO NOT WRITE IN THIS BOX)

UNION PACIFIC RAILROAD CO.

(SUBDIVISION) \_\_\_\_\_

M. P. \_\_\_\_\_ E. S. \_\_\_\_\_

UNDERGROUND WIRELINE CROSSING

(NEAREST RR STATION) \_\_\_\_\_ (COUNTY) \_\_\_\_\_ (STATE) \_\_\_\_\_

FOR \_\_\_\_\_ (APPLICANT)

RR FILE NO. \_\_\_\_\_ DATE \_\_\_\_\_

**WARNING**

IN ALL OCCASIONS, U. P. COMMUNICATIONS  
DEPARTMENT MUST BE CONTACTED IN ADVANCE  
OF ANY WORK TO DETERMINE EXISTENCE AND  
LOCATION OF FIBER OPTIC CABLE.  
PHONE : 1-800-336-9193